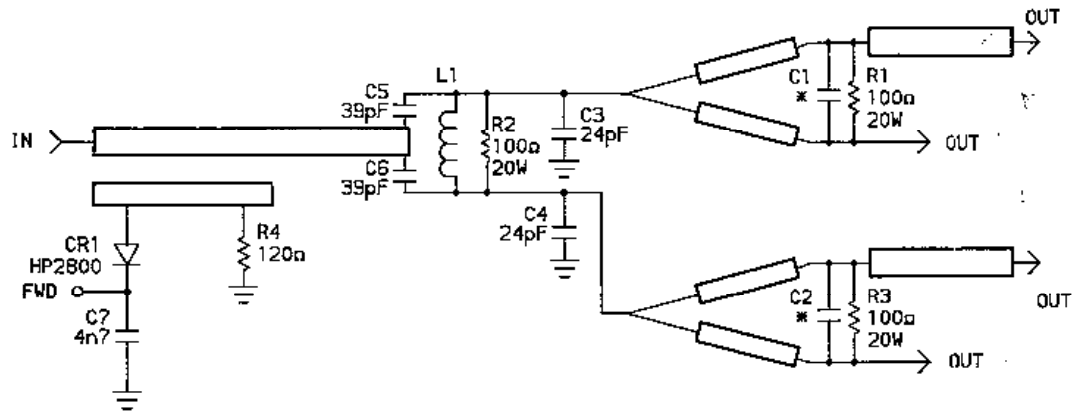


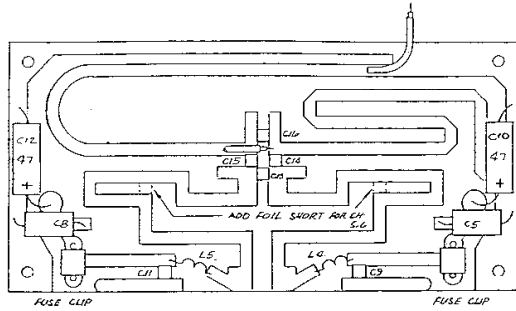
① ASSEMBLY



NOTE :
 * C1 & C2 15pF CHANNEL 2-4
 C1 & C2 10pF CHANNEL 5-6

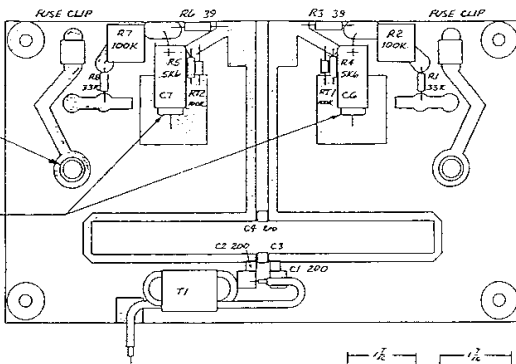
ASSEMBLY & SCHEMATIC DIAGRAMS:
 1 KW MODULE INPUT SPLITTER,
 Drawings 40D1209 & 10A1198.

Figure 22.



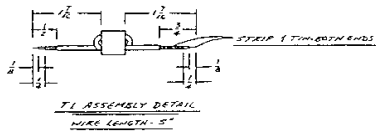
- ① CH 2-4 ASS'Y AS SHOWN.
- ② CH 5-6 ADD FOIL SHORT IN POSITION SHOWN

OUTPUT PC BOARD
Drawing 30C1006

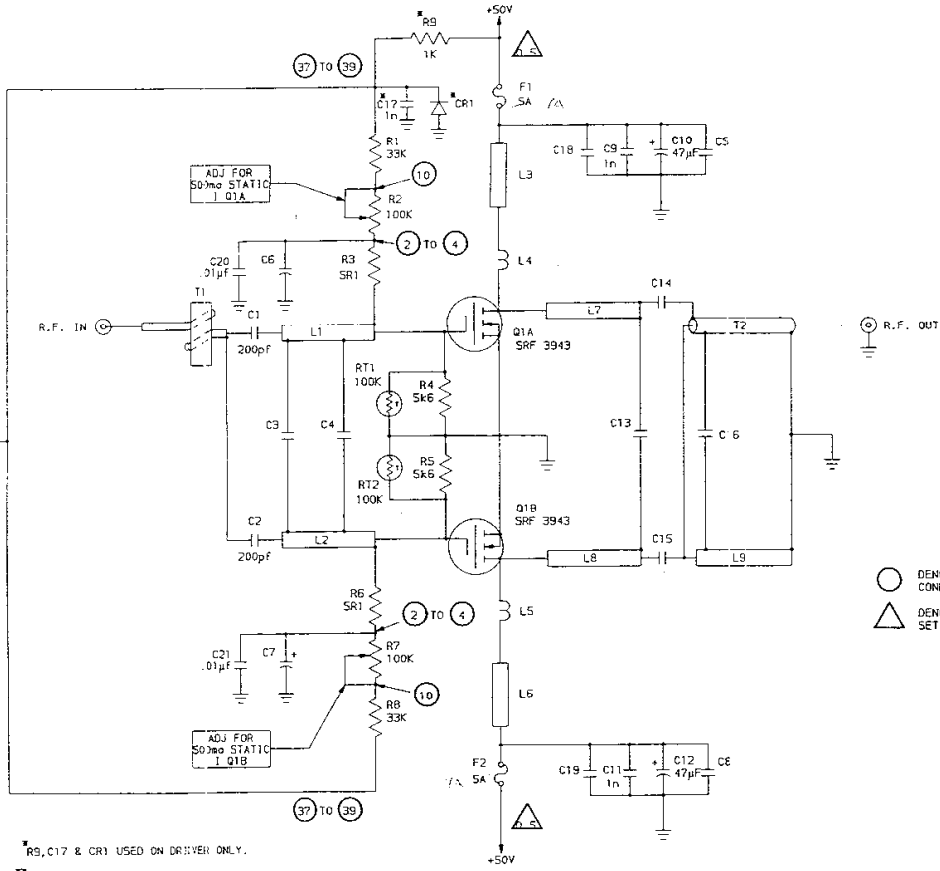


1/8" SPACER MOUNTED ON TOP OF BOARD

COLOUR BANDS OF C4, C7 TO BE AT THIS END



INPUT PC BOARD
Drawing 30C1005



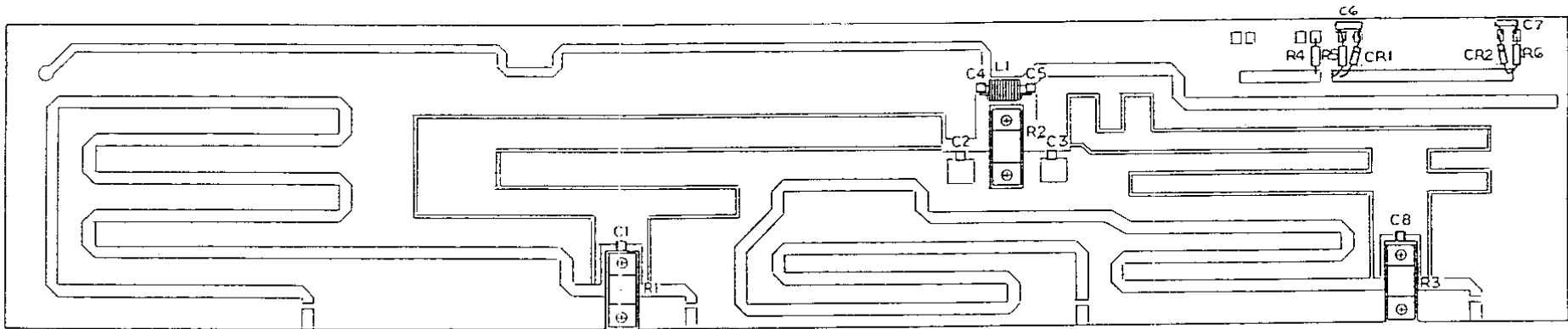
- DENOTES DC VOLTAGE UNDER STATIC CONDITIONS FOR Q1A AND Q1B
- △ DENOTES BIASING OF Q1A AND Q1B SET TO 0.5 AMPS BY ADJUSTMENTS OF R2 AND R7

C#	CH. 2-4	CH. 5-6
C3	62pf	47uf
C4	200pf	240pf
C5	330n	330n
C6	39n	.1uf
C7	39n	.1uf
C8	330n	330n
C13	82pf	75pf
C14	180pf	120pf
C15	180pf	120pf
C16	51pf	15pf
C18	OH17	.1uf
C19	OH17	.1uf

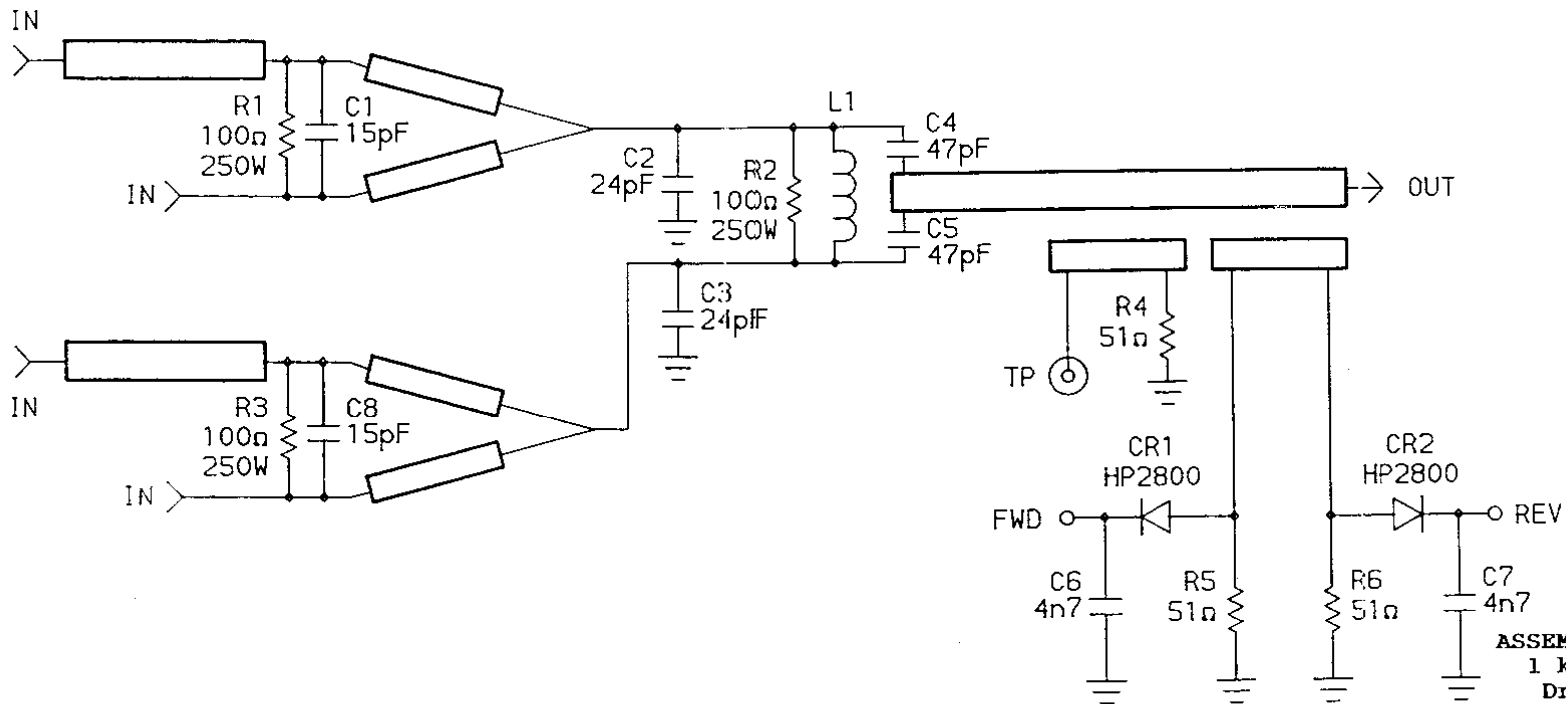
RS, C17 & CR1 USED ON DRIVER ONLY.
PA ONLY.

ASSEMBLY & SCHEMATIC DIAGRAMS:
1 kW LB RF MODULE SINGLE STAGE,
Dwgs 30C1001, 30C1005, 30C1006.

Figure 23.

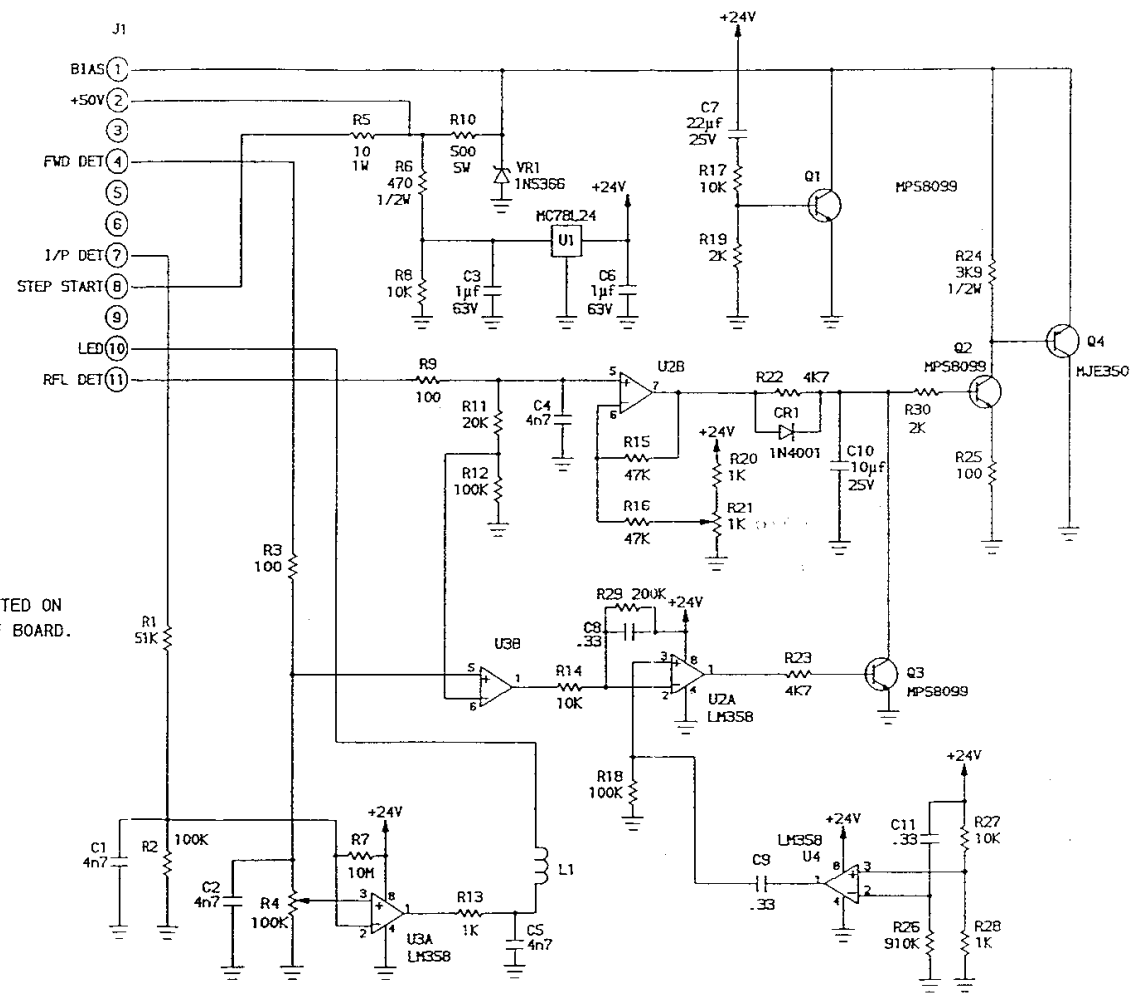


① ASSEMBLY

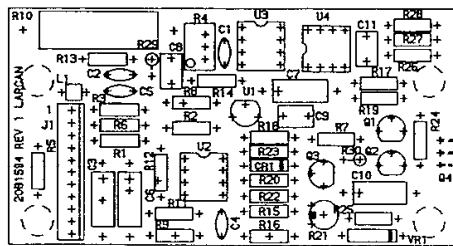


ASSEMBLY & SCHEMATIC DIAGRAMS:
1 kW MODULE OUTPUT COMBINER,
Drawings 40D1206 & 10A1197.

Figure 24.



SOLDER THESE 2 SPACERS
UNDERSIDE ONLY.
DO NOT SOLDER
OTHER 2 SPACERS.



ASSEMBLY

NOTE-Q4 MOUNTED ON
UNDERSIDE OF BOARD.

ASSEMBLY & SCHEMATIC DIAGRAMS:
1 kW MODULE VSWR CONTROL PCB,
Drawings 20B1594 & 30C1418.

Figure 25.