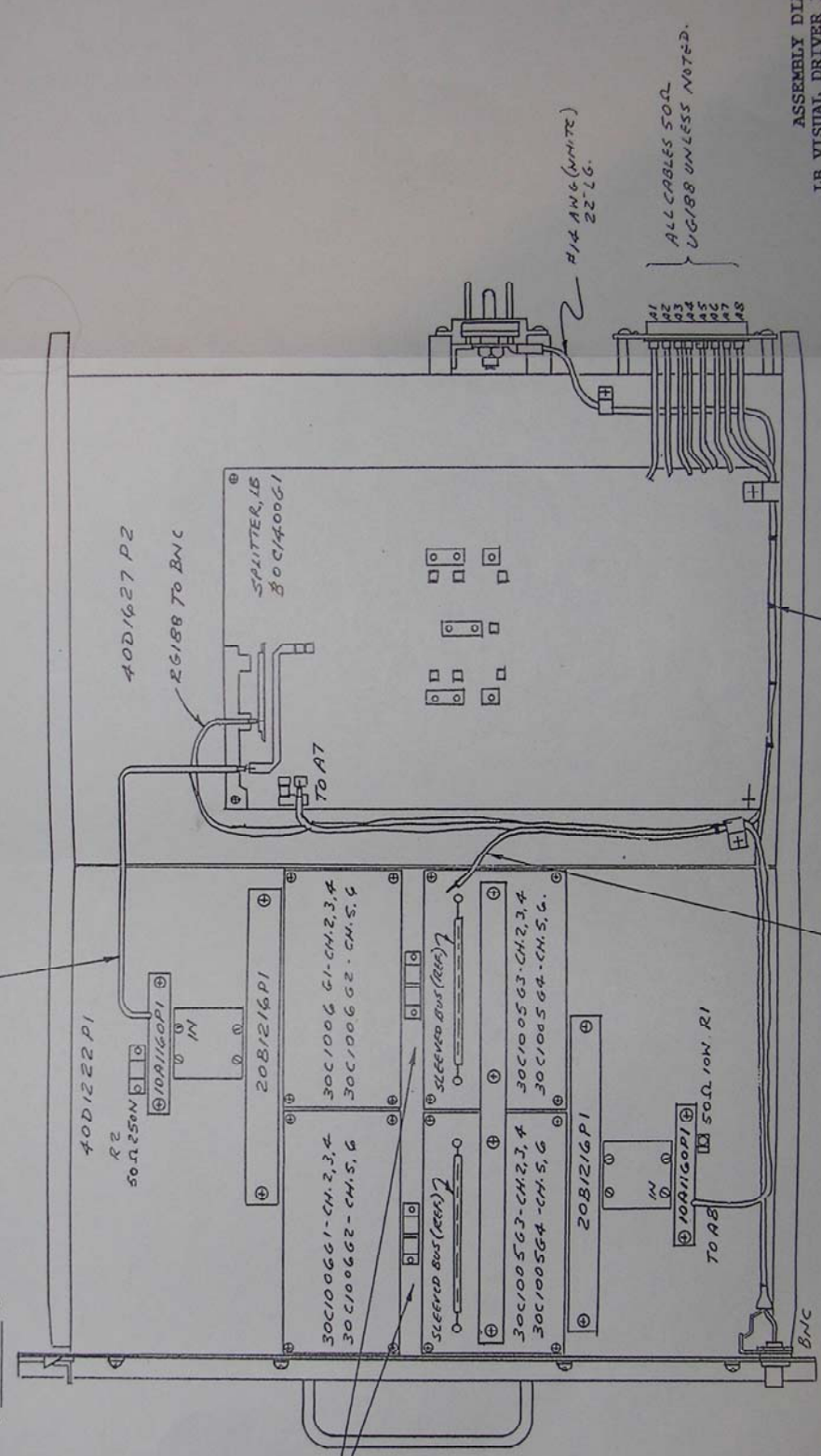


ON PT. 5 AND PT. 6 ASSEMBLIES (LO BD)
 ADD C1 AND C2 WHERE SHOWN
 (2-PLACES)

UTRS-50L SEMI-RIGID



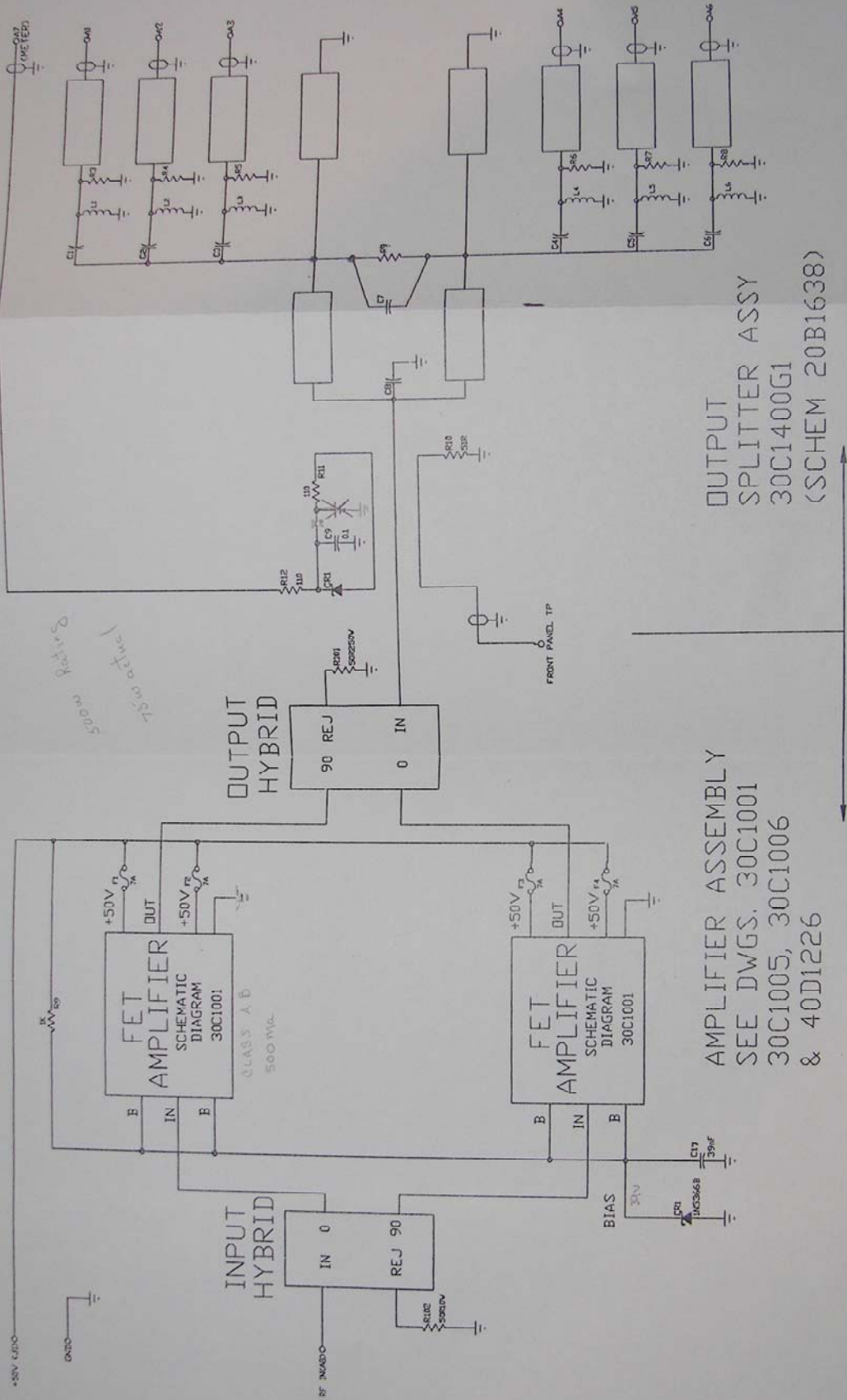
#14 AWG (WHITE)
 22" LG.

ALL CABLES 50Ω
 UG188 UNLESS NOTED.

#14 GA WIRE - 22" LG
 SOLDER TO BOARD.

HUBS MUST BE DOWN
 ON ALL WIRE TIES.

ASSEMBLY DIAGRAM:
 LB VISUAL DRIVER IFA-2,
 Drawing 40D1226.
 Figure 26.



*500mV reference
750mV active*

OUTPUT SPLITTER ASSY
30C1400G1
(SCHEM 20B1638)

AMPLIFIER ASSEMBLY
SEE DWGS. 30C1001
30C1005, 30C1006
& 40D1226

WIRING DIAGRAM:
LB VISUAL DRIVER IPA-2,
Drawing 20B1966.

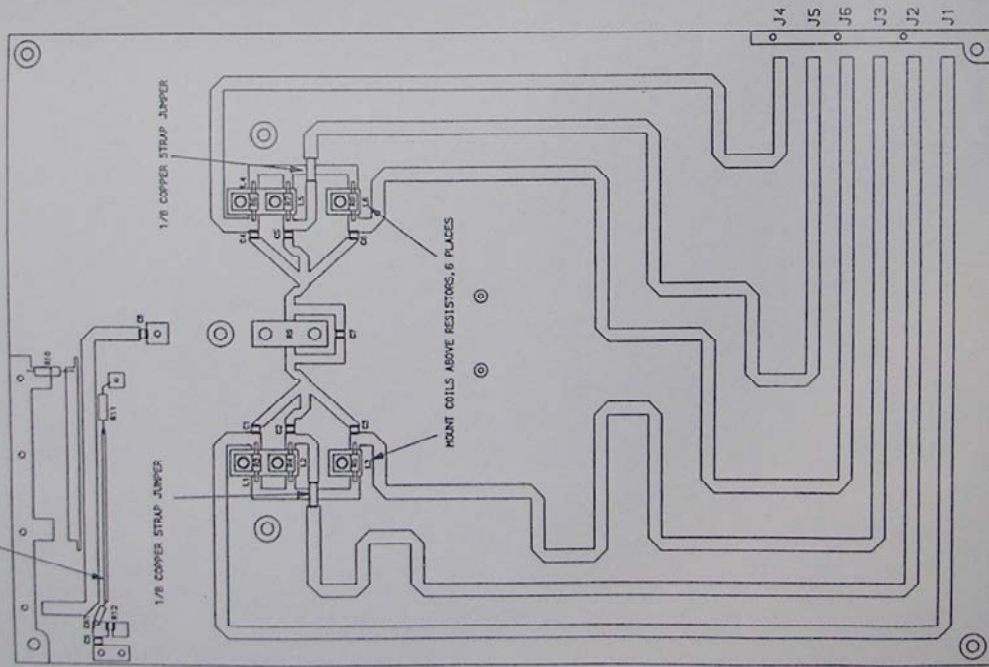
Figure 27.

#18 SLEEVE 1-.75" LG.

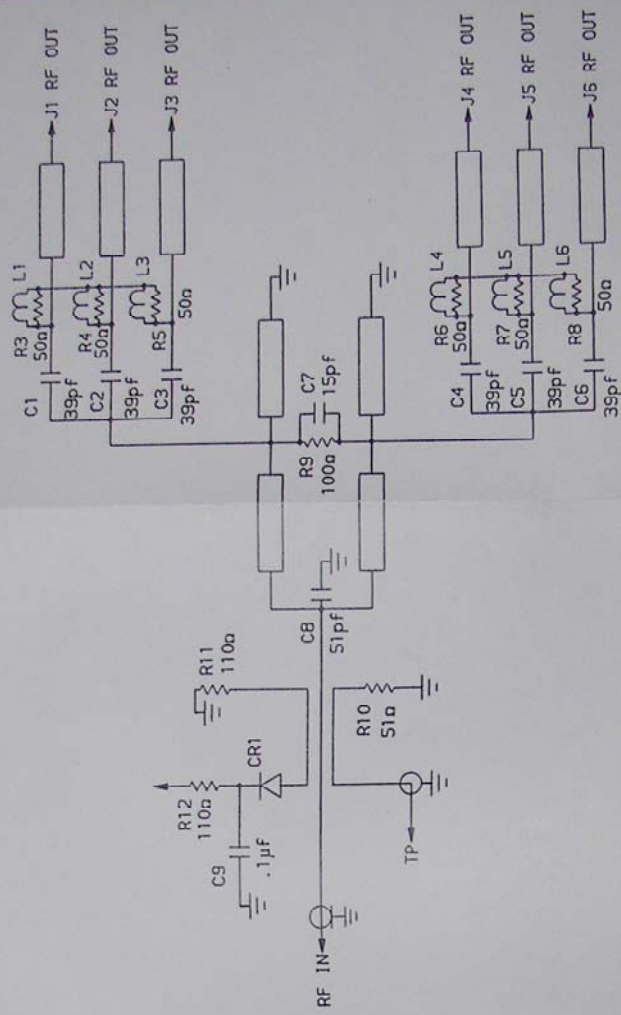


THIS LOOP MAY BE
REMOVED IN TEST.

INSTALL ON TRACE BETWEEN
CR1 AND R11.



ASSEMBLY DIAGRAM
IPA-2 LB SPLITTER BOARD
Drawing 30C1400

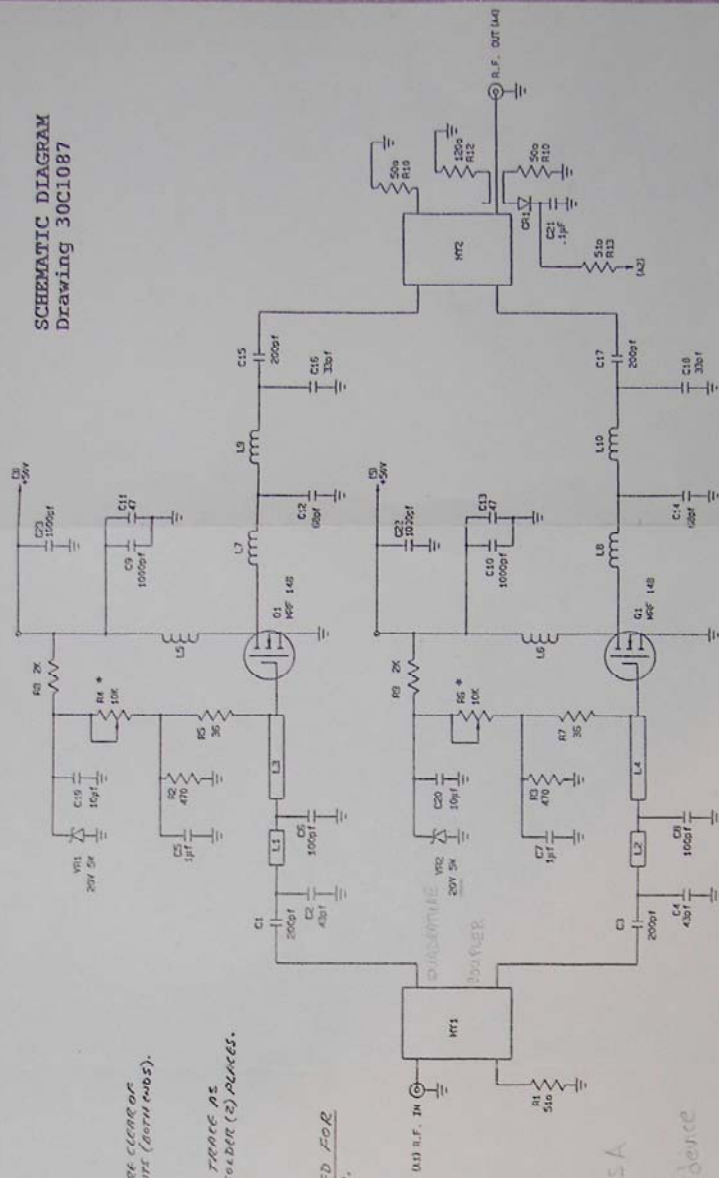


SCHEMATIC DIAGRAM
IPA-2 LB SPLITTER
Drawing 20B1638

ASSEMBLY & SCHEMATIC DIAGRAMS:
IPA-2 LB SPLITTER BOARD,
Drawings 30C1400 & 20B1638.

Figure 28.

SCHEMATIC DIAGRAM
Drawing 30C1087

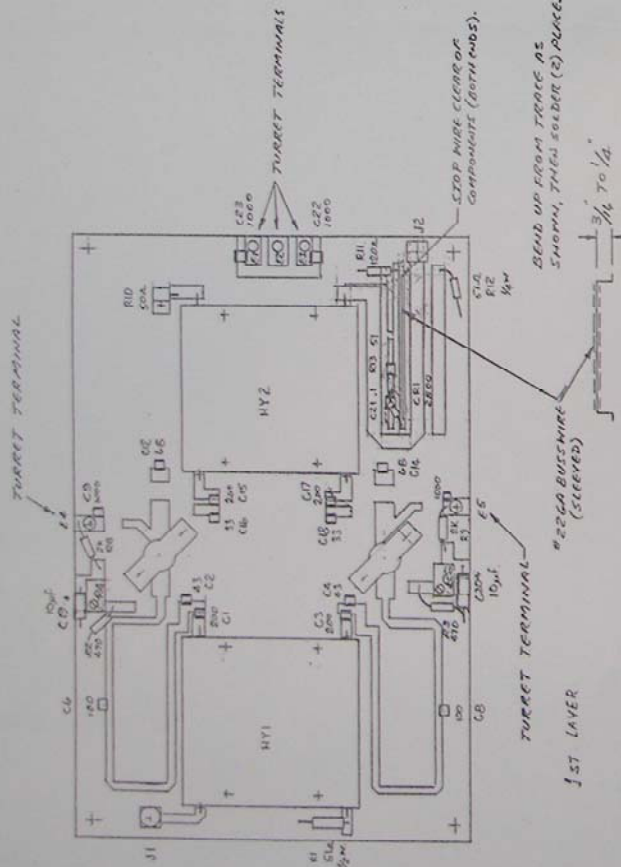


* ADJUST R4 AND R6 FOR THESE IDLING DRAIN CURRENTS:
IN Q1 AND Q2 RESPECTIVELY: SET BOTH AT 600 MA FOR
VISUAL RF SERVICE, AND 800 MA FOR AURAL RF SERVICE.

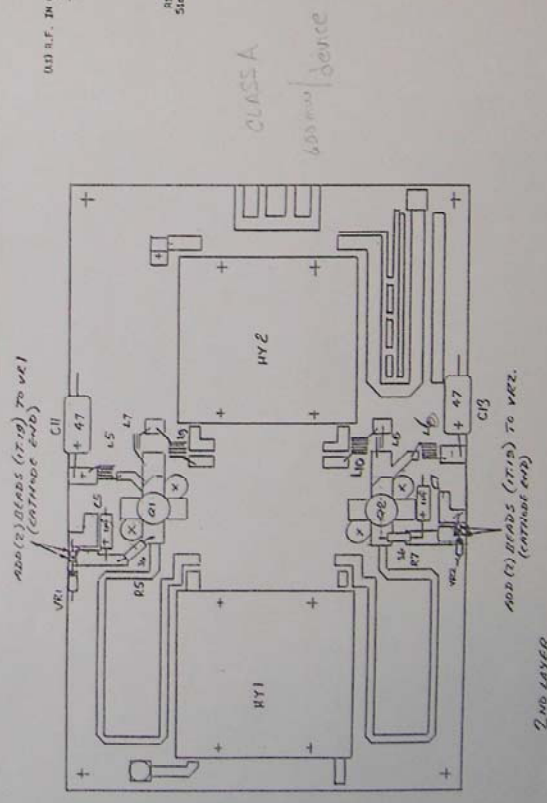
600

ASSEMBLY & SCHEMATIC DIAGRAMS:
LB IPA RF CIRCUIT BOARD,
Drawings 30C1118 & 30C1087.

Figure 30.



ASSEMBLY DIAGRAM
Drawing 30C1118



2ND LAYER